

BURNS

AUCTION SERVICE

Heart of America

Carnival Glass

Association

Convention

Auction

9:30 A.M.

Saturday, April 29, 2000

Preview: Friday Evening at 6:30 P.M.

& 7:00 A.M. Saturday

at

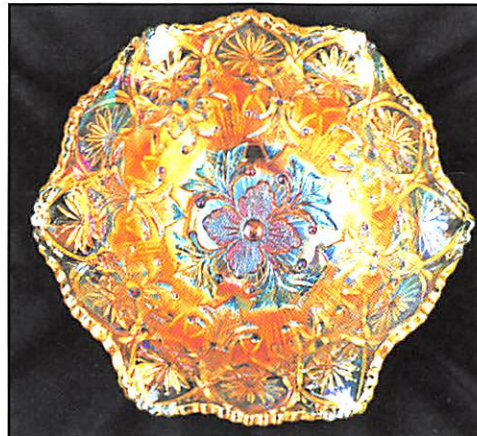
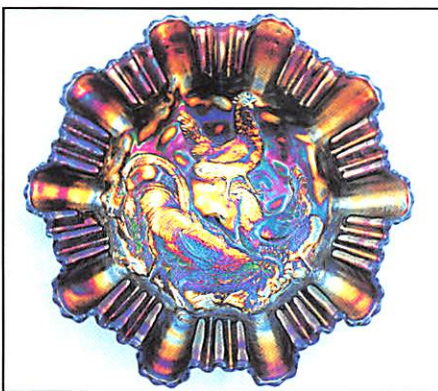
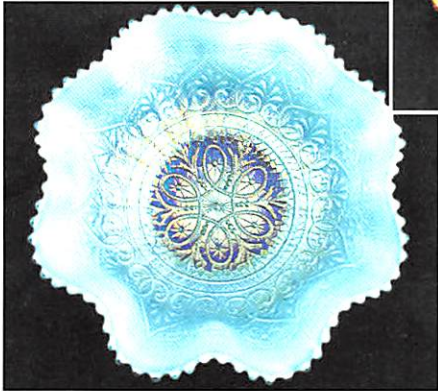
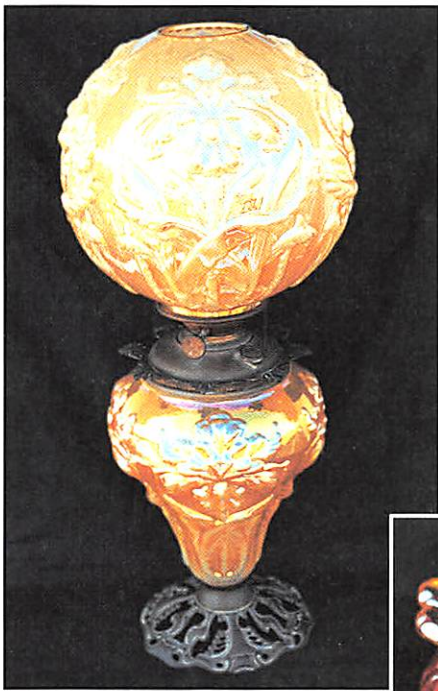
The Embassy Suites – K.C.I.

7640 Tiffany Springs Parkway

Kansas City, Missouri 64153 • (816) 891-7788

or for reservations 1-800-EMBASSY

(just off Exit 10 of I-29)



Well... Hello H.O.A.C.G.A. - It's been a while since we've sold here and it is sure our pleasure to be able to present to you the H.O.A.C.G.A. Convention Auction. *4/29/2000*

This year's selection of glassware is from the collection of Bruce and Darcy Hill from Minnesota. A bunch of you folks know Bruce and the type of glass he likes ... talk about a barn-burner! We might want to mention also, that they have kids getting ready for college and with that, have decided to part with their glass.

As much glass as we sell, it just doesn't get boring - this collection has as many unique items and beautiful rarities as any and there would be no better place to sell it than at the H.O.A.C.G.A. Convention. I sure hope you like it.

This year's convention will be held at the Embassy Suites - K.C.I. just off Exit 10 of I-29. It is a wonderful facility located just across from the K.C.I. Airport. Make your reservations now by calling the motel direct at 816-891-7788 or President Robert Grissom at 816-356-5320 for further information.

If there is anything we can do for you, please feel free to call or e-mail us and we'll get ahold of you A.S.A.P. I'll be looking forward to seeing ya'll again real soon!

CHECK OUT BURNS AUCTION SERVICE ON THE WEB!

Visit our new Web site for information on upcoming auctions, complete auction listings and photos of auction highlights. You can e-mail your bids or requests for information.
<http://zeus.kspress.com/woodsland/burnsauuction> e-mail: brnzauctsv@aol.com

BURNS AUCTION SERVICE

Tom Burns
 P.O. Box 608
 Bath, New York 14810
 (607) 776-7942

Bill Richards
 44 Water St., Poland, OH 44514
 (330) 757-2001
 FAX (330)-757-4917

Bill Richards, III
 2253 Country Lane
 Poland, OH 44514
 (330) 755-2620

Mail Bids honored under the following conditions.

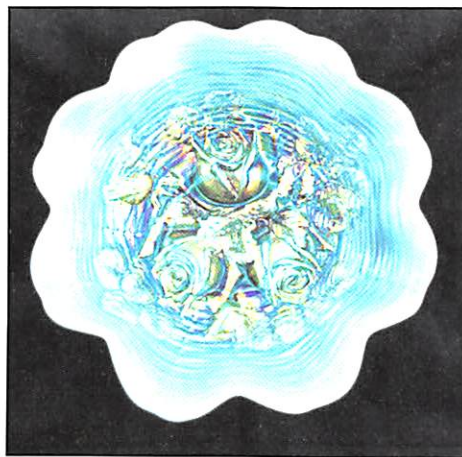
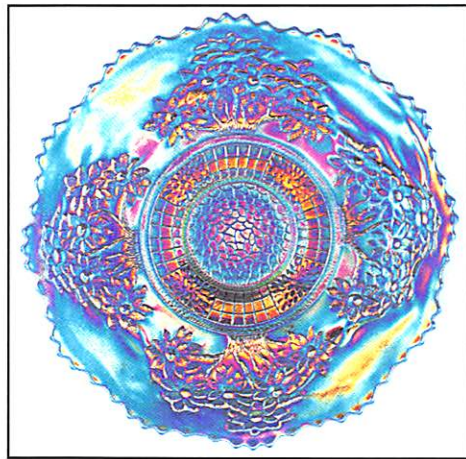
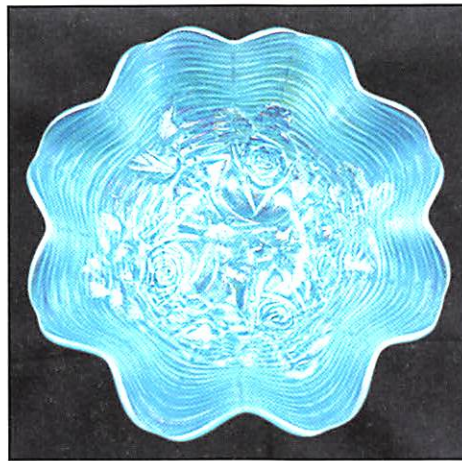
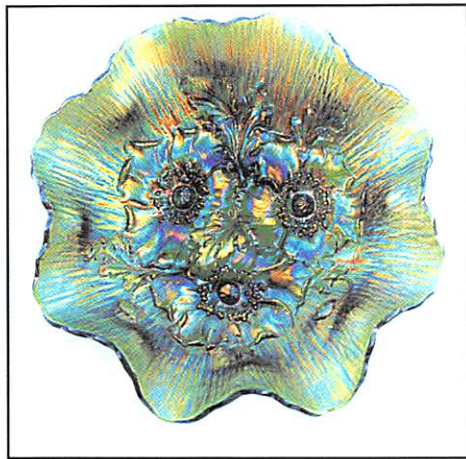
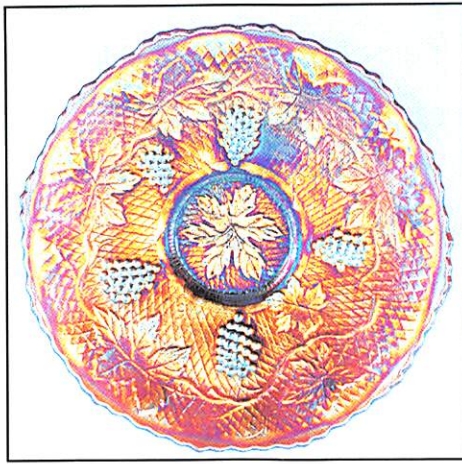
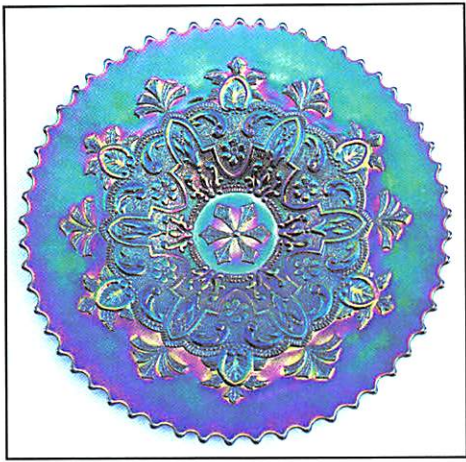
1. No deposit required, Bidders will take full responsibility to honor any and all bids we execute for them. Payment in full plus postage and handling required after notification and before we ship any item to them.
2. Items are bid on in perfect condition with average or above average iridescence OR as listed in the brochures. Bids will not be carried out when damage on an item has been found during the auction. **PEOPLE PRESENT AT AUCTION ARE RESPONSIBLE FOR FINDING ANY PINHEADS, WEAR, SPOTTINESS, MANUFACTURER'S DEFECTS OR ANY OTHER MINOR FLAWS, ETC.**
3. Successful bidders will be notified by collect call from the auctioneer (so be sure to include the phone number).
4. Phone inquiries about the glass or any other questions are welcome.
5. If you have some other person at the auction bidding for you, they must pay for the item before taking it.
6. Any terms or conditions given the day of the auction will supersede any previously published information.
7. Mail, e-mail, fax and phone bids are due by Monday, April 24, 2000.

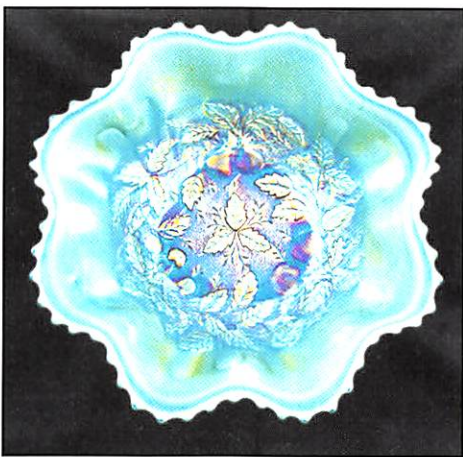
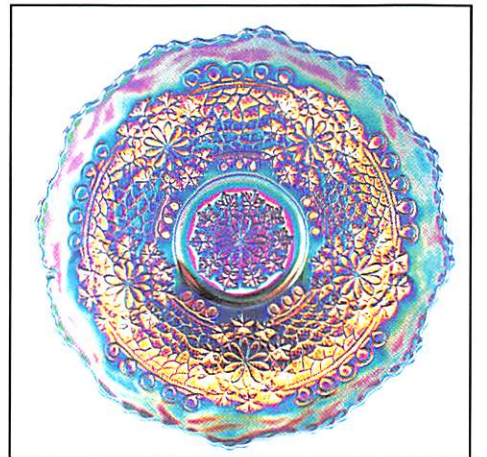
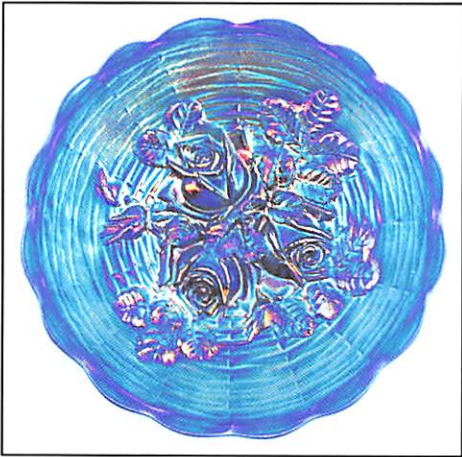
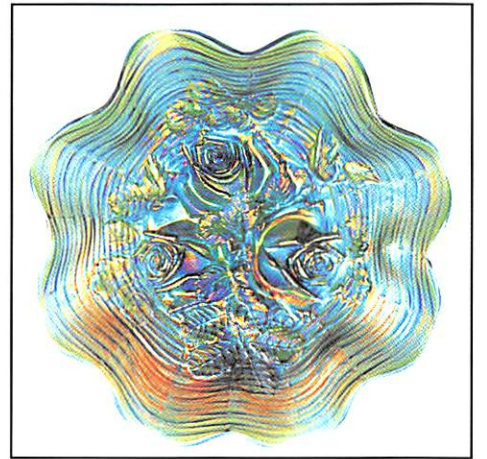
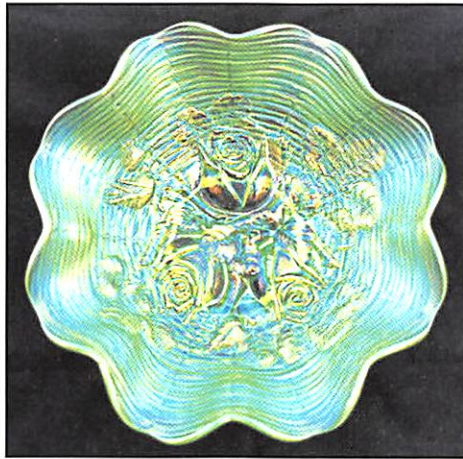
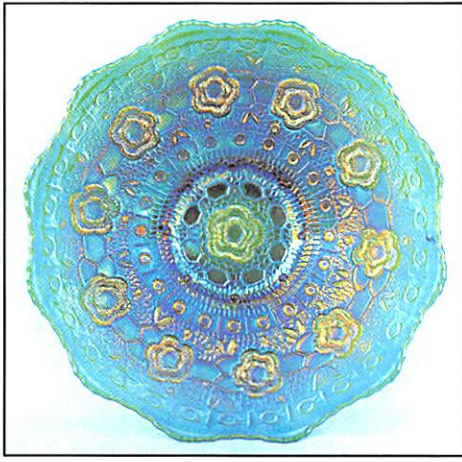
- | | | | |
|---------------|---|-------------------|--|
| <u>65</u> 1. | 4" Tall Westmoreland Hand Vase Novelty - Ruby Flash.
(unusual novelty; tough to find) | <u>900</u> 9. | FENTON STRETCH TALL PERFUME BOTTLE
W/ FLOWER FORMED STOPPER - ICE GREEN (VERY RARE ITEM TO FIND W/ THIS FINIAL; REALLY NICE) |
| <u>225</u> 2. | 4-1/4" Fenton Kittens 6 Ruffled Bowl - Crystal (very rare item in crystal) | <u>13,000</u> 10. | N HEARTS AND FLOWERS 8 RUFFLED BOWL
W/ RIBBED EXT. - AQUA OPAL. (EXTREMELY RARE ITEM W/ SUPER OPAL.; GREAT ADDITION TO ANYONE'S NORTHWOOD COLLECTION) <i>phillips</i> |
| <u>175</u> 3. | 7-1/2" Fenton Horsehead Medallion Flat Plate - Crystal (another unusual item in crystal) | <u>350</u> 11. | N Hearts and Flowers 8 Ruffled Bowl w/ Ribbed Ext. - Ice Blue (very scarce w/ nice pink highlights) |
| <u>275</u> 4. | Westmoreland Wild Berry Covered Powder Jar - Dk. Mari. (very rare and is an excellent example) | <u>2500</u> 12. | N HEARTS AND FLOWERS FLAT PLATE W/ RIBBED EXT. - PURP. (RARE AND DESIRABLE W/ GREAT MULTI-COLORED IRID.) |
| <u>275</u> 5. | SUN'S UP HATPIN - LAVENDER (VERY RARE AND VERY DESIRABLE; LIGHT BASE COLOR) | <u>2000</u> 13. | N HEARTS AND FLOWERS FLAT PLATE W/ RIBBED EXT. - DK. MARI. (RARE AND DESIRABLE; REALLY DARK W/ SUPER IRID.) |
| <u>55</u> 6. | U.S. Glass Stretch Large Interior Panel Covered Candy Jar - Celeste Blue (great color and irid.; desirable) | <u>1000</u> 14. | N HEARTS AND FLOWERS STEMMED RUFFLED COMPOTE W/ PLAIN EXT. - ICE BLUE (RARE AND DESIRABLE; FROSTY W/ PINK HIGHLIGHTS) |
| <u>85</u> 7. | (2) Fenton Stretch Handled Lemonade Glasses w/ Cobalt Handles - Celeste Blue (scarce; hourglass shaped; selling choice) <i>35 x 1</i> | | |
| <u>275</u> 8. | PAIR FENTON STRETCH BREAKFAST SUGAR AND CREAMER W/ COBALT HANDLES - ICE GREEN (RARE PAIR AND GETTING TOUGHER TO FIND; NICE) | | |

- 1050 (15) N HEARTS AND FLOWERS STEMMED RUFFLED COMPOTE W/ RIBBED EXT. - AQUA OPAL. (RARE AND DESIRABLE; NICE OPAL. W/ SUPER IRID.)
- 475 15A. N HEARTS AND FLOWERS STEMMED RUFFLED COMPOTE W/ RIBBED EXT. - AQUA OPAL. (ANOTHER RARE ITEM W/ AN EXCELLENT BUTTERSCOTCH OVERLAY)
- 305 16. N Hearts and Flowers Stemmed Ruffled Compote w/ Ribbed Ext. - Dk. Mari. (very scarce w/ nice dark color and irid.)
- 700 17. N FRUITS AND FLOWERS STEMMED HANDLED BON BON - AQUA OPAL. (RARE AND DESIRABLE; SUPER PASTEL EXAMPLE)
- 500 18. N FRUITS AND FLOWERS STEMMED HANDLED BON BON - LAVENDER (VERY RARE ITEM; GREAT BASE COLOR AND IRID.)
- 550 19. N FRUITS AND FLOWERS STEMMED HANDLED BON BON - AQUA OPAL. (RARE W/ NICE BUTTERSCOTCH OVERLAY AND OPAL TIPS)
- 575 20. N FRUITS AND FLOWERS STEMMED HANDLED BON BON - ICE BLUE (RARE W/ GREAT BASE COLOR AND IRID.)
- 150 21. N Fruits and Flowers Stemmed Handled Bon Bon - White (very scarce and desirable; nice frosty irid.)
- 350 22. N FRUITS AND FLOWERS STEMMED HANDLED BON BON - ELEC. BLUE (SUPER, SUPER COLOR AND IRID.; REALLY NICE)
- 295 23. N Fruits and Flowers Stemmed Handled Bon Bon - Green (quite a nice example w/ great irid.)
- 500 ~~24~~ 24. N Fruits and Flowers Stemmed Handled Bon Bon - Purp. (scarce w/ excellent irid.; nice)
- 165 25. N Fruits and Flowers Stemmed Handled Bon Bon - Dk. Mari. (dark color and irid.; very desirable)
- 400 26. 7-1/4" N Fruits and Flowers 6 Ruffled Bowl w/ Basketweave Ext. - Aqua. (rare base color for this item; a toughie)
- 1050 (27) 9" N THREE FRUITS STIPPLED BOWL W/ P.C.E. AND RIBBED EXT. - DK. MARI. (HAS TO BE ONE OF THE VERY BEST EXAMPLES I'VE SEEN)
- 500 28. 9" N THREE FRUITS STIPPLED 8 RUFFLED BOWL W/ RIBBED EXT. - SAPPHIRE (VERY RARE ITEM; SUPER COLOR AND IRID.; HAS A FLAKE OR TWO ON THE EXTERIOR)
- 550 29. 8-3/4"-9" N THREE FRUITS STIPPLED 8 RUFFLED BOWL W/ RIBBED EXT. - ELEC. BLUE (RARE ITEM; HAS BRIGHT BLUE HIGHLIGHTS)
- 4000 (30) 9-1/4" N THREE FRUITS STIPPLED PLATE W/ RIBBED EXT. - AQUA OPAL. (RARE AND VERY DESIRABLE; SUPER OPAL. AND IRID.; FRUIT MAY HAVE A SMALL BIT OF WEAR)
- 1400 31. 8-3/4"-9" N THREE FRUITS STIPPLED 8 RUFFLED BOWL W/ RIBBED EXT. - AQUA OPAL. (RARE AND VERY DESIRABLE; SUPER OPAL. AND IRID.)
- 1700 32. N THREE FRUITS MEDALLION SPATULA FTD. 8 RUFFLED BOWL W/ MEANDER EXT. - AQUA OPAL. (SUPER, SUPER OPAL.; ONE OF THE BETTER EXAMPLES)
- 170 33. N SINGING BIRD HANDLED MUG - AQUA OPAL. (RARE AND VERY DESIRABLE; SUPER OPAL. AND NICE IRID.)
- 450 34. N Singing Bird Handled Mug - Ice Blue (rare; nice base color w/ light irid.)
- 720 35. N PEACOCK AT THE URN LG. ICE CREAM BOWL - ELEC. BLUE (HAS TO BE THE BEST! I'VE NOT SEEN ANY BETTER; WOW!)
- 1000 36. N PEACOCK AT THE URN LG. ICE CREAM BOWL - DK. ICE BLUE (ANOTHER EXAMPLE THAT'S ABOUT AS GOOD AS THEY GET!)
- 600 37. N Peacock at the Urn Lg. Ice Cream Bowl - Dk. Mari. (scarce item w/ nice color and irid.)
- 250 38. N Peacock at the Urn All Over Stippled Ind. Ice Cream Bowl - Elec. Blue (very scarce; nice color and really nice irid.)
- 165 39. N Peacock at the Urn Ind. Ice Cream Bowl - Purp. (nice satiny finish)
- 4000 40. N PEACOCK AT THE URN IND. ICE CREAM BOWL - AQUA OPAL. (VERY RARE AND VERY DESIRABLE W/ SUPER OPAL.)
- 650 (41) N PEACOCK AT THE URN IND. ICE CREAM BOWL - GREEN (VERY RARE ITEM IN THIS COLOR; REALLY NICE IRID.)
- 900 (42) N PEACOCK AT THE FOUNTAIN HANDLED WATER PITCHER - WHITE (RARE AND DESIRABLE; FROSTY W/ NICE IRID.)
- 1700 43. N PEACOCK AT THE FOUNTAIN 4 PC. PUNCH SET - PURP. (RARE AND DESIRABLE; GREAT IRID.; WELL MATCHED)
- 850 44. N Peacock at the Fountain 8 Pc. Punch Set - Dk. Mari. (scarce set; nice dark color and well matched)
- 900 45. N PEACOCK AT THE FOUNTAIN HANDLED PUNCH CUP - AQUA OPAL. (VERY RARE AND EXTREMELY DESIRABLE; SUPER COLOR W/ A NICE BUTTERSCOTCH OVERLAY)
- 1500 (46) N PEACOCK AT THE FOUNTAIN 8 PC. PUNCH SET - RENNIGER BLUE (EXTREMELY RARE BASE COLOR; BASE IS BLUE; SUPER)
- 1600 47. N PEACOCKS PLATE W/ RIBBED EXT. - ELEC. BLUE (RARE AND DESIRABLE W/ NICE BLUE HIGHLIGHTS)
- 1600 (48) N PEACOCKS PLATE W/ RIBBED EXT. - LAVENDER (VERY RARE ITEM; NICE LIGHT BASE COLOR; SUPER)
- 1050 49. N PEACOCKS STIPPLED RUFFLED BOWL W/ RIBBED EXT. - RENNIGER BLUE (RARE AND DESIRABLE BASE COLOR AND NICE IRID.)

- 700 50. N PEACOCKS STIPPLED RUFFLED BOWL W/ P.C.E. AND RIBBED EXT. - AQUA OPAL. (EXTREMELY RARE ITEM; HAS SOME CHIPS ON THE EDGE BUT, FIND ANOTHER ONE)
- 300 51. N PEACOCKS STIPPLED BOWL W/ P.C.E. AND RIBBED EXT. - BLUE (RARE AND DESIRABLE; NICE BRIGHT HIGHLIGHTS)
- 3250 52. N PEACOCKS RUFFLED BOWL W/ RIBBED EXT. - AQUA OPAL. (A REAL BEAUT; PASTEL FINISH W/ BRIGHT IRID.; ALMOST BLUE OPAL.)
- 500 (53). N PEACOCKS RUFFLED BOWL W/ RIBBED EXT. - EMERALD GREEN (OUTSTANDING EXAMPLE OF A RARE COLOR; SUPER IRID.; HAS A COUPLE SMALL CHIPS ON EDGE)
- 700 54. N PEACOCKS RUFFLED BOWL W/ RIBBED EXT. - WHITE (RARE AND DESIRABLE; QUITE UNDERPRICED ANYMORE)
- 2100 55. 18-1/4" TALL X 5-1/4" BASE N TREE TRUNK SWUNG FUNERAL VASE - ELEC. BLUE (AN IMPRESSIVE ITEM W/ BLUE AND GOLD HIGHLIGHTS; REALLY DESIRABLE)
- 1300 56. 10-1/2" TALL N TREE TRUNK STANDARD SWUNG VASE - AQUA OPAL. (RARE AND DESIRABLE; A CROSS BETWEEN PASTEL AND BUTTERSCOTCH)
- 1450 57. 10-1/2" TALL N DIAMOND POINT SWUNG VASE - AQUA OPAL. (ANOTHER RARE AND DESIRABLE ITEM W/ A GREAT OPAL LOOK)
- 1550 (6) *Fine Rib vase (AD)*
- 175 58. 11" Tall N Diamond Point Swung Vase - White (scarce; has nice irid.; really frosty)
- 250 59. 10" Tall N Diamond Point Swung Vase - Light Ice Blue (rare item; getting tough to find; nice)
- 2300 60. 4-3/4" TALL N TWIG BUD VASE - AQUA OPAL. (WE SOLD THE MATE TO THIS GUY YEARS AGO; HAS NO POLISHED PONTIL - AND I'VE ALWAYS BELIEVED IT TO BE OLD)
- 425 61. 6-3/4" TALL N FOUR PILLAR SQUATTY SWUNG VASE - ICE GREEN OPAL. (QUITE A RARE ITEM TO FIND IN THIS COLOR AND SIZE)
- 310 62. 11-1/2" Tall N Four Pillar Swung Vase - Aqua Opal. (super example w/ perfect feet and an attractive swing)
- 190 63. 10-3/4"-11" Tall N Four Pillar Swung Vase - Sapphire or Celeste (rare color for this item; looks to have a problem near the base)
- 750 64. 10-1/4" TALL N LEAF COLUMNS SWUNG VASE - SAPPHIRE (RARE AND VERY DESIRABLE COLOR FOR THIS ITEM; A NICE BRIGHT EXAMPLE)
- 2700 65. N Corn Vase w/ Husk Base - Aqua Opal. (very rare and desirable; a nice shelf piece; damaged at base connector)
- 850 66. N DAISY AND DRAPE FTD. FLARED VASE - AQUA OPAL. (A SUPER PASTEL EXAMPLE; GREAT OPAL. AND IRID.; VERY ATTRACTIVE)
- 300 67. N Daisy and Drape Ftd. Turned In Vase - White (scarce item; nice and frosty)
- 300 68. 8-1/4" N Drapery Variant Swung Vase - Blue (very scarce variation of this pattern; blue highlights)
- 225 69. 8-1/4" N Drapery Swung Vase - Blue Opal. (very scarce item; not carnival; great opal.)
- 550 70. 8-3/4" N DRAPERY SWUNG VASE - LIME GREEN-VASELINE/ MARL. (EXTREMELY RARE BASE COLOR FOR THIS PATTERN; SUPER UNUSUAL)
- 650 71. 8-3/4" N Drapery Swung Vase - Aqua Opal. (very rare and very desirable; super opal.; has chip on base)
- 1550 72. 7-3/4"-8" N DRAPERY SWUNG VASE - SAPPHIRE (EXTREMELY RARE COLOR FOR THIS ITEM; AND THIS ONE IS EXCEPTIONAL)
- 1500 73. 7-1/2" N DRAPERY SWUNG VASE - GREEN (VERY RARE COLOR; HAS GREAT COLOR AND IRID.; NICE)
- 200 74. 7-1/2" N Drapery Swung Vase - Ice Blue (really tough color to find in this pattern; has flake on base)
- 225 75. 7" N DRAPERY SWUNG VASE - ICE GREEN (SCARCE PASTEL ITEM; NICE COLOR AND IRID.)
- 195 76. 8-1/2" N Drapery Swung Vase - White (very scarce item; nice and frosty irid.)
- 375 77. 7" N Drapery Swung Vase - Dk. Marl. (super example w/ excellent color and irid.)
- 375 78. 7-1/4" N Drapery Swung Vase - Marl. (nice example w/ pastel highlights)
- 60 79. 5-1/2" Australian Magpie 8 Ruffled Sauce - Marl. (super color w/ great detail)
- 1000 80. 9-3/4" AUSTRALIAN KIWI LG. 8 RUFFLED BOWL - PURP. (VERY RARE PATTERN W/ AVERAGE DETAIL; MANUF. FLAW ON ONE POINT)
- 200 81. 9-1/2" AUSTRALIAN KANGAROO LG. 16 RUFFLED BOWL - MARI. (RARE PATTERN; GREAT DETAIL AND IRID.)
- 175 82. 9-1/2" Australian Kookaburra Lg. 12 Ruffled Bowl - Marl. (very scarce w/ excellent color and irid.)
- 200 83. 10" Australian Magpie Lg. Ruffled Bowl - Marl. (very scarce and very desirable; nice color)
- 700 84. 9-3/4" AUSTRALIAN MAGPIE LG. 8 RUFFLED BOWL - PURP. (RARE AND VERY ATTRACTIVE; GREAT DETAIL)
- 2100 85. 5-3/4" FENTON PANTHER 6 RUFFLED FTD. IND. BERRY BOWL - RED (VERY RARE; PERFECT W/ GREAT COLOR AND DETAIL; ONE OF THE BEST I'VE SEEN)
- 350 86. 5-1/2"-5-3/4" FENTON PANTHER 6 RUFFLED FTD. IND. BERRY BOWL - AQUA (VERY RARE BASE COLOR; SUPER ITEM)
- 275 87. 5" FENTON PANTHER ROUND FTD. IND. BERRY BOWL - AMYTH. (VERY RARE W/ GREAT COLOR AND DETAIL; SUPER)
- 55 88. 5-1/2" Fenton Panther Odd 6 Ruffled Ftd. Ind. Berry Bowl - Marl. (odd ruffle; sorta different)
- 175 89. Fenton Panther Lg. 8 Ruffled Ftd. Master Berry Bowl - Dk. Marl. (super color and irid.; great detail)

- 425 90. FENTON PANTHER LG. 8 RUFFLED FTD. MASTER BERRY BOWL - BLUE (RARE AND VERY DESIRABLE; GREAT DETAIL AND IRID.)
- 350 91. 10-3/4" Fenton Stag and Holly Lg. Ball Ftd. 8 Ruffled Bowl - Blue (scarce item w/ a radium type irid.; has tiny open bubble on collar base)
- 95 92. 9-1/4" Fenton Feather Stitch 8 Ruffled Bowl - Dk. Mari. (scarce pattern; nice dark color and irid.)
- 325 (93) FENTON PEACOCK AT THE URN STEMMED RUFFLED COMPOTE - AMYTH. (ACTUALLY QUITE RARE BASE GLASS COLOR; NICE)
- 125 94. Fenton Orange Tree Covered Powder Jar - Vaseline/ Mari. (rare base color for this item; unusual)
- 900 95. 7-1/2" FENTON LEAF CHAIN 6 RUFFLED BOWL - RED (RARE; SUPER RED BASE GLASS W/ NICE IRID.)
- 375 96. FENTON BLACKBERRY 2 ROW OPEN EDGE 2 SIDED HAT - RED (RARE AND DESIRABLE; W/ AN UNUSUAL SHAPE)
- 100 97. Fenton Blackberry 2 Row Open Edge 6 Ruffled Hat - Mari./ Vaseline (very scarce base color; looks vaseline)
- 200 98. UNUSUAL FIGURAL WATER PIPE CANDY CONTAINER - WHITE (EXTREMELY RARE NOVELTY ITEM; NEVER SEEN ANOTHER)
- 175 99. Fenton Orange Tree Standard Flared Handled Mug - Brick Red (scarce item w/ silvery irid.)
- 16,000 100. 10-1/2" FENTON BIRDS AND CHERRIES FLAT CHOP PLATE - AMYTH. (AN EXTREMELY RARE ONE OF A KIND ITEM W/ BEAUTIFUL COLOR AND IRID.; HAS MICROSCOPIC PINPOINT ON TOP OF ONE CHERRY)
- 2000 (101) 9-3/4" FENTON BIRDS AND CHERRIES FLAT ICE CREAM BOWL - BLUE (ANOTHER RARE SHAPE FOR THIS PATTERN; REALLY NEAT ITEM)
- 750 (A) Amber Nu-ART Chop Plate
200 102. 8-3/4" Fenton Holly 8 Ruffled Bowl - Dk. Amber (rare base glass color w/ super irid.)
- 225 103. 9-1/4" Fenton Holly Bowl w/ 3 in 1 Edge - Powder Blue (scarce base color w/o much of a marigold overlay)
- 1100 104. 9" FENTON HOLLY 8 RUFFLED BOWL - P. OPAL (VERY RARE AND VERY DESIRABLE W/ A SATINY FINISH)
- 1250 105. 9-3/4" FENTON HOLLY FLAT PLATE - AMYTH. (RARE AND DESIRABLE; SUPER EXAMPLE W/ GREAT COLOR AND IRID.)
- 700 106. 9-1/2" FENTON HOLLY FLARED PLATE - GREEN (RARE AND DESIRABLE W/ A DARKER SATINY FINISH)
- 375 107. 9-1/2" FENTON HOLLY FLAT PLATE - BLUE (VERY DESIRABLE ITEM W/ BRIGHT HIGHLIGHTS)
- 1300 108. 11" FENTON APRIL SHOWERS SWUNG VASE W/ TIGHT CRIMPED EDGE - AMYTH. OPAL (EXTREMELY RARE ITEM; SUPER OPAL AND IRID.)
- 165 109. 15-1/2" TALL X 4" BASE FENTON RUSTIC MID SIZE SWUNG VASE - WHITE (ACTUALLY QUITE A RARE COLOR FOR THIS SIZE; NICE)
- 700 110. FENTON ORANGE TREE HANDLED LOVING CUP - AMYTH. (RARE AND VERY DESIRABLE; SUPER COLOR AND IRID.)
- 650 111. FENTON ORANGE TREE HANDLED LOVING CUP - GREEN (RARE AND VERY DESIRABLE; SUPER COLOR AND IRID.)
- 530 112. FENTON ORANGE TREE HANDLED LOVING CUP - BLUE (ANOTHER SUPER EXAMPLE; GREAT COLOR AND IRID.)
- 1,000 113. 8" FENTON ORANGE TREE ICE CREAM SHAPED BOWL - MARI/ MOONSTONE (VERY RARE ITEM AND SHAPE; GREAT COLOR AND IRID.)
- 800 114. 9-1/2" FENTON ORANGE TREE FLAT PLATE - DK. MARI. (PROBABLY AS NICE AN EXAMPLE AS I'VE SEEN; SUPER)
- 1500 115. 9-1/2" FENTON ORANGE TREE FLAT PLATE - ELEC. BLUE (SUPER COLOR AND IRID.; FLAT AND NICE)
- 800 (116) 9-1/4" FENTON HEART AND VINE FLAT PLATE - BLUE (VERY SCARCE ITEM W/ A NICE REDDISH IRID. - FLAT)
- 500 (117) 9-1/4" FENTON HEART AND VINE FLAT PLATE - AMYTH. (RARE BASE COLOR FOR THIS ITEM; NICE SATINY IRID.)
- 250 118. 9-1/2" Fenton Dragon and Strawberry 8 Ruffled Bowl - Blue (rare and desirable; nice average color and irid.)
- 250 119. 8-3/4" Fenton Dragon and Strawberry Ice Cream Shaped Bowl - Mari. (very scarce item w/ great detail and irid.)
- 2750 120. 9-1/4" FENTON CONCORD GRAPE FLAT PLATE - AMYTH. (VERY RARE AND VERY DESIRABLE; REALLY NICE IRID.; A SUPER EXAMPLE)
- 3100 (121) 9-1/4" FENTON LEAF CHAIN FLAT PLATE - BLUE/ ELEC. BLUE (RARE AND A SUPER EXAMPLE W/ BRIGHT BLUE FINISH)
- 625 122. 7-1/2" FENTON LEAF CHAIN FLAT PLATE - WHITE (RARE SIZE FOR THIS ITEM IN A RARE COLOR)
- 300 123. 8-1/2" Fenton Ten Murns Bowl w/ Tight Candy Ribbon Edge - Amyth. (very scarce; nice bright color and irid.)
- 525 124. Fenton Kittens 2 Sided Banana Dish - Amyth. (rare base color w/ a nice satiny finish)
- 6750 125. 11-1/4" DUGAN GARDEN PATH VARIANT CHOP PLATE W/ SODA GOLD EXTERIOR - PURP. (RARE AND EXTREMELY DESIRABLE; SUPER RED AND GREEN HIGHLIGHTS)
- 1050 126. 7-3/4" M'BURG LETTERED COURTHOUSE LOW 6 RUFFLED BOWL - AMYTH. (RADIUM W/ EXCELLENT COLOR AND DETAIL; NICE)
- 1100 127. 5-3/4" IMPERIAL OPEN ROSE 8 RUFFLED SAUCE - BLUE (EXTREMELY RARE COLOR FOR THIS PATTERN; BRIGHT IRID.)





- 1/00 128. N G & C FTD HATPIN HOLDER - ICE BLUE (VERY RARE COLOR FOR THIS PATTERN; HAS SMALL CHIP ON ONE FOOT)
- 1500 129. FENTON BUTTERFLY AND BERRY FTD HATPIN HOLDER - BLUE (VERY RARE AND VERY DESIRABLE; HAS SATINY IRID.)
- 250 130. 9-1/2" FENTON LOTUS AND GRAPE FLAT PLATE - GREEN (VERY RARE W/ GREAT DETAIL AND GREEN HIGHLIGHTS; NICE)
- 350 131. 9-1/2" Fenton Peacock at the Urn Flat Plate - Dk. Mari. (very scarce; a nice example w/ red highlights)
- 900 132. 9" FENTON HOLLY 8 RUFFLED BOWL - MARI/ MOONSTONE (AN EXCELLENT EXAMPLE; NICE BUTTERSCOTCH OVERLAY)
- 800 133. FENTON ORANGE TREE HANDLED LOVING CUP - DK. MARI. (SUPER, SUPER DARK EXAMPLE; GREAT DETAIL)
- 900 134. 9-1/2" Fenton Captive Rose Flat Plate - Amyth. (very scarce item w/ nice gold highlights)
- 1500 (135) 9-1/2" FENTON CAPTIVE ROSE FLAT PLATE - GREEN (ABSOLUTELY FANTASTIC ITEM; HAS SUPER BLUE HIGHLIGHTS; A SUPER, SUPER ITEM)
- 900 136. 9-1/4" FENTON CAPTIVE ROSE FLAT PLATE - BLUE (VERY SCARCE; PRETTY EXAMPLE W/ BLUE HIGHLIGHTS)
- 700 137. 9-1/4" Fenton Captive Rose Flat Plate - Mari. (very scarce item w/ nice satiny finish)
- 400 138. 7-1/2" FENTON PINE CONE FLAT PLATE - ROOT BEER AMBER (EXTREMELY RARE COLOR FOR THIS ITEM; REALLY NICE)
- 4.25 139. 8-1/2" Fenton Butterfly and Berry Swung Vase - Green (rare base color; nice dark irid.)
- 1000 140. FENTON MIKADO LG. 8 RUFFLED STEMMED COMPOTE - ELEC. BLUE (SUPER EXAMPLE W/ BRIGHT BLUE HIGHLIGHTS)
- 200 141. Fenton Mikado Lg. 8 Ruffled Stemmed Compote - Mari. (a satiny example)
- 700 142. FENTON BLACKBERRY SPRAY CRIMPED EDGE J.I.P. HAT - AQUA OPAL. (RARE AND VERY DESIRABLE; NICE OPAL. AND SHAPE)
- 170 143. Fenton Blackberry Spray Crimped Edge J.I.P. Hat - Mari/ Lime Green (scarce base color; green on marigold)
- 950 144. FENTON LATTICE AND GRAPE 7 PC. TANKARD WATER SET - WHITE (EXTREMELY RARE FENTON WATER SET; SUPER!)
- 2250 145. 8-1/4" FENTON LEAF CHAIN ICE CREAM SHAPED BOWL - REVERSE AMBERINA (ONE OF 2 KNOWN EXAMPLES; GREAT RARITY; VERY UNUSUAL)
- 325 146. 8-3/4" TALL FENTON FINE RIB STANDARD SWUNG VASE - RED W/ STREAKS (VERY SCARCE W/ AN UNUSUAL STREAKED EFFECT)
- 125 147. 9-3/4" Tall Fenton Fine Rib Standard Swung Vase - Dk. Amber (scarce base color; nice item)
- 45 148. 12" Tall Fenton Fine Rib Lg. Swung Vase - Lt. Amber (scarce size for this base color)
- 100 149. 10-1/2" Tall Fenton Fine Rib Odd Swung Vase - Aqua (real nice base color; very desirable)
- 375 150. 10" TALL FENTON FINE RIB STANDARD SWUNG VASE - AQUA OPAL. (VERY RARE AND VERY DESIRABLE; NICE COLOR W/ OPAL. TIPS)
- 1350 151. FENTON LOTUS AND POINSETTIA FTD. RUFFLED SAUCE - ICE GREEN OPAL. (RARE AND VERY DESIRABLE; SUPER OPAL. AND OVERLAY)
- 1750 152. FENTON DIAGONAL BAND ENAMELED IRIS DECORATED 6 PC. TANKARD WATER SET - GREEN (VERY RARE SET; ONE OF MY FAVORITE SHAPES)
- 120 153. 4-1/2" Westmoreland Intaglio Flower 4 Sided Sauce w/ Bail Wire Handle - Lt. P. Opal. (scarce and unusual; souvenir of Chicago, O.)
- 600 154. WESTMORELAND WILD ROSE HANDLED SYRUP JUG - DK. MARI. (RARE AND DESIRABLE; GREAT COLOR AND DETAIL)
- 4250 155. 1-3/4" TALL X 3-1/2" DIAM. U.S. GLASS COSMOS AND CANE LADIES SPITTOON - HONEY AMBER (ABSOLUTELY SUPER, SUPER RARITY; FROM A SMALL BERRY BOWL)
- 375 156. U.S. Glass Estate Small Perfume Bottle and Stopper - Smoke Flash (rare; really nice and unusual)
- 250 157. 8-1/2" M'burg Rays and Ribbons Ice Cream Shaped Bowl - Amyth. (radium and a real beaut.; tough shape)
- 200 158. 9-1/2" M'burg Holly Whirl 6 Ruffled Bowl - Green (radium and nice w/ goldish highlights)
- 200 159. M'burg Swirl Hobnail Rose Bowl - Purp. (radium; nice dark color; roughness on hobs)
- 6500 160. M'BURG FLEUR DE LIS DEEP 6 RUFFLED BOWL - VASELINE (ABSOLUTELY FANTASTIC ITEM; SUPER, SUPER COLOR AND RADIUM IRID.; FIRST KNOWN IN THIS COLOR AND SHAPE)
- 90 161. 9-1/2" M'burg Nesting Swan 6 Ruffled Bowl - Pastel Mari. (rare base color and very unusual; radium)
- 35 162. 5" M'burg Blackberry Wreath Deep Round Sauce - Dk. Mari. (odd shape; nice dark radium finish)
- 130 163. 5-1/4" M'burg Peacock Deep Flared "Proof" Sauce - Dk. Mari. (very scarce and desirable radium finish; no bee and no beading and no urn)
- 400 164. M'burg Sunflower Pin Tray - Amyth. (rare; nice color; smoothed spot on one exterior spot)
- 575 165. 8-3/4" TALL M'BURG WIDE PANEL STEMMED 6 RUFFLED COMPOTE - DK. MARI. (EXTREMELY RARE ITEM; BLANK FOR THE FLOWERING VINE COMPOTE)
- 175 (166) 6-1/4" M'BURG PEACOCK 6 RUFFLED SAUCE - AMYTH. (RADIUM AND RARE; HAS NO BEE AND NO BEADING)

- 550 167. 6"-6-1/4" M'burg Peacock 6 Ruffled Sauce - Dk. Mari. (satiny; quite a rare item w/ nice irid.)
168. 7-1/2" Dugan Six Petals 6 Ruffled Bowl - P. Opal. (nice color and great opal.)
- 150 169. Dugan Starfish 8 Ruffled Stemmed Compote - Dk. P. Opal. (scarce item; great color and opal.)
- 900 170. **DUGAN BUTTERFLY AND TULIP WHIMSEY 4 FTD. FLARED BOWL W/ I.F.F. EXT. - P. OPAL. (HAS TO BE THE RAREST PEACH OPAL. ITEM SO FAR; RARE SHAPE AND COLOR; WOW! YA GOTTA SEE IT TO APPRECIATE IT)**
- 425 171. 4-3/4" Tall x 5-1/4" Flared Dugan Lined Lattice Squatty Swung Vase - Dk. P. Opal. (a real cutie; great color and opal.; nice!)
- 275 172. 9" Tall Dugan Lined Lattice Swung Vase - Lt. Amyth./ Horehound (very scarce color and tint; really unusual)
- 300 173. 9-1/2" Tall Dugan Lined Lattice Swung Vase - Purp. (super color w/ bright irid.)
- 165 174. 10-1/2" Tall Dugan Lined Lattice Swung Vase - White (nice and frosty; very attractive; has sun-colored lavender tint)
- 4500 175. **DUGAN CHRISTMAS COMPOTE - PURP. (RARE AND DESIRABLE; POPULAR ITEM W/ NICE COLOR AND IRID.)**
- 100 176. Dugan Constellation Stemmed 6 Ruffled Compote - White (super color and irid.; nice and frosty)
- 375 177. **11" TALL DUGAN PULLED LOOP SWUNG VASE - CELESTE BLUE (VERY RARE BASE COLOR FOR THIS ITEM; SUPER)**
- 475 178. **8-1/4" TALL DUGAN PULLED LOOP SQUATTY SWUNG VASE - PURP. W/ OPAL. TIPS (REALLY UNUSUAL W/ OPAL. ON THE TIPS; ATTRACTIVE)**
- 150 179. Dugan Amaryllis Miniature Flared Stemmed Compote - Purp. (scarce item; has a satiny finish)
- 5300 180. **10-3/4" DUGAN FARMYARD BOWL W/ 3 IN 1 EDGE - PURP. (VERY RARE AND VERY DESIRABLE; GREAT COLOR W/ GOLD-MULTI-COLORED IRID.; NICE!)**
- 235 181. 9-1/4" Imperial Pansy Low Ruffled Plate - Lt. Amyth. (rare; really flat w/ a light base color)
182. 9" Imperial Pansy 8 Ruffled Bowl - Smoke (quite a rare color for this item; nice)
- 160 183. 8-3/4" Imperial Star of David 8 Ruffled Bowl - Purp. (super color and irid.; really bright irid.)
- 250 184. 7-1/2" Imperial Sand and Shell Deep 8 Ruffled Bowl - Purp. (super color w/ great irid.; really bright)
- 425 185. **IMPERIAL GRAPE 6 PC. WATER SET - PURP. (RARE AND DESIRABLE SET; NICE MULTI-COLORED IRID.)**
- 95 186. 6" Tall x 6-1/2" Diam. Imperial Beaded Bullseye Squatty Flared Vase - Dk. Mari. (odd and desirable shape; nice flare)
- 340 187. 3-3/4" Tall x 5-3/4" Diam. Imperial Parlor Panels Squatty Ruffled Vase - Smoke (rare and very desirable shape; super item; small area of peeling on edge)
- 450 188. 8-3/4" Tall x 8-3/4" Diam. Imperial Interior Panels Squatty Flared Vase w/ Wheel Etched Floral Design - Mari./ Frosted (signed w/ German Iron Cross; great size and scarce w/ wheel etching)
- 375 189. **9-1/2" TALL IMPERIAL STRETCH INTERIOR PANELS SWUNG VASE - RED (SUPER RED ITEM W/ GREAT COLOR)**
- 500 190. **PAIR IMPERIAL DOUBLE SCROLL CANDLESTICKS - RED/ AMBERINA BASE (RARE PAIR; WELL MATCHED; RED W/ A YELLOW BASE)**
- 1350 191. **IMPERIAL HOMESTEAD CHOP PLATE, NOT SIGNED - GREEN (VERY RARE AND DESIRABLE; FAIR DETAIL W/ NICE IRID.)**
- 65 192. 9" Imperial Pansy 8 Ruffled Bowl - Amyth. (goldish irid.)
- 35 193. Imperial Little Barrel Perfume - Dk. Mari. (scarce; nice dark color; has 2 manuf. flakes on top edge)
- 150 194. 10-1/2" Imperial Ripple Standard Swung Vase - Purp. (super irid.)
- 400 195. **IMPERIAL POPPY SHOW VASE - PURP. (VERY RARE W/ SUPER COLOR AND IRID.; EXCELLENT) CRACK**
- 2250 196. **IMPERIAL POPPY SHOW VASE - SMOKE (VERY RARE W/ SUPER IRID.; GREAT YELLOW IRID.)**
- 900 197. **IMPERIAL POPPY SHOW VASE - PASTEL MARI. (EXTREMELY RARE BASE COLOR W/ FANTASTIC YELLOW IRID.)**
- 60 198. Imperial Grape Rose Bowl, Signed w/ Iron Cross - Amberina (not carnival; rare and unusual)
- 180 199. N'wood Concave Diamond Stretch Tumbler - Vaseline (rare and desirable w/ super base color)
- 2500 200. **CONSOLIDATED REGAL IRIS GONE WITH THE WIND LAMP - PASTEL MARI. (VERY RARE AND EXTREMELY DESIRABLE; SUPER IRID.)**
- 1800 201. **FENTON (FOR LEVAY) REGAL IRIS GONE WITH THE WIND LAMP - AQUA OPAL. (LATER ITEM THAT IS VERY COLLECTIBLE; NICE)**
- 1600 202. **CONSOLIDATED SUNKEN HOLLYHOCK GONE WITH THE WIND LAMP - PASTEL MARI. (VERY RARE AND VERY DESIRABLE; NICE IRID.; HAS SPIDER IN TOP)**
- 65 203. N Peacock at the Fountain Tumbler - Amyth. w/ Swirl Effect (very scarce effect; has small flake on base)
- 490 204. (6) N Acorn Burr Handled Punch Cups - Blue (first full set I've seen; where's the bowl and base?)
- 3500 205. **N ACORN BURR 8 C. PUNCH SET - GREEN (SUPER SET; GREAT COLOR W/ BLUE AND RED HIGHLIGHTS)**
- 550 206. **N ROUND HANDLED BUSHEL BASKET - AQUA OPAL. (AN EXCELLENT EXAMPLE W/ SUPER OPAL AND IRID.)**
- 650 207. **N ROUND HANDLED BUSHEL BASKET - SAPPHIRE/ AQUA OPAL. (UNUSUAL TINT; GREAT IRID. W/ A HINT OF OPAL.)**
- 95 208. N Round Handled Bushel Basket - Pastel Mari. (super irid.; has an unusual tint; nice)
- 500 209. **N ROUND HANDLED BUSHEL BASKET - GREEN OPAL. (NOT CARNIVAL; BUT AN EXTREMELY RARE ITEM)**

900 210. N MEMPHIS 8 PC. PUNCH SET - WHITE (VERY RARE AND VERY DESIRABLE; FROSTY W/ GREAT IRID.)

225 211. 11-1/4" N FINE RIB SWUNG VASE - SAPPHIRE (VERY RARE BASE COLOR; NICE W/ AN ODD SWING)

300 212. 9" N Nippon Bowl w/ P.C.E. and Ribbed Ext. - Purp. (nice example w/ a multi-colored satiny finish)

25 213. N Wishbone Tri-Cornered Ftd. Plate w/ Ruffles and Rings Exterior - Amyth. (a very rare shape w/ average irid.)

300 214. N Drapery Rose Bowl - Blue (rare base color; has a dark irid.; nice)

375 215. N DRAPERY ROSE BOWL - AQUA OPAL. (SUPER PASTEL EXAMPLE; THICK OPAL. AND NICE IRID.)

225 216. N BEADED CABLE FTD. ROSE BOWL - AQUA OPAL. (ANOTHER SUPER EXAMPLE W/ A TOUCH OF BUTTERSCOTCH)

400 217. N LEAF AND BEADS FTD. ROSE BOWL - AQUA OPAL. (SUPER PASTEL EXAMPLE; GREAT OPAL AND IRID.)

250 218. N LEAF AND BEADS FTD. FLARED NUT BOWL - AQUA OPAL. (AN EXTREMELY RARE SHAPE; ONE OF THE BETTER EXAMPLES)

175 219. N Double Loop Chalice (or Open Sugar) - Aqua Opal. (very scarce; nice irid. and opal.)

500 220. N Fine Cut and Roses Ftd. Rose Bowl w/ Fancy Interior - Aqua Opal. (very rare and desirable; has chip on one foot)

350 221. N Fine Cut and Roses Ftd. Flared Candy Dish w/ Fancy Interior - Aqua Opal. (super, super pastel opal.; rough chips on feet)

500 222. N LEAF AND BEADS FTD. ROSE BOWL W/ FLORAL INTERIOR - SAPPHIRE (EXTREMELY RARE BASE COLOR W/ SUPER IRID.)

500 223. N LEAF AND BEADS FTD. ROSE BOWL - TEAL (ODD SHADE OF COBALT; VERY DESIRABLE)

350 224. N G & C Stippled Handled Bon Bon w/ Basketweave Ext. Black Amyth. (rare variation w/ dark color and nice irid.) *flake*

1800 225. N G & C COVERED SWEETMEAT COMPOTE - DK. MARI. (AS RARE A PIECE OF G & C THAT THERE IS; SUPER COLOR AND IRID.)

160 226. 8-1/2" N G & C Variant Bowl w/ P.C.E. and Basketweave Ext. - Dk. Mari. (scarce item w/ a nice dark finish)

1100 227. N G & C STIPPLED COVERED TOBACCO JAR - BLUE (RARE; HAVEN'T SOLD ONE OF THESE IN A WHILE; TWO SMALL DINGS ON EDGE)

175 228. N G & C Handled Bon Bon w/ Basketweave Ext. - White (rare item; nice and frosty color and irid.)

700 229. N G & C HANDLED PUNCH CUP - AQUA OPAL. (VERY RARE AND NICE; HAS A TOUCH OF BUTTERSCOTCH)

3750 230. 8-1/2" N G & C STIPPLED BOWL W/ P.C.E. AND RIBBED EXT. - AQUA OPAL. (VERY RARE AND EXTREMELY DESIRABLE; SUPER OPAL. AND IRID.)

500 231. 8-3/4" N G & C 8 RUFFLED BOWL W/ RIBBED EXTERIOR - WHITE (ONLY ONE REPORTED SO FAR IN THIS COLOR; SUPER IRID. AND FROSTY)

3250 (232) N POPPY OBLONG RUFFLED RELISH TRAY W/ RIBBED EXTERIOR - AQUA OPAL. (REALLY NICE PASTEL EXAMPLE W/ GREAT IRID.)

1300 233. N DANDELION HANDLED MUG - AQUA OPAL. (HAS ABOUT AS MUCH OPAL. AS I'VE SEEN ON ONE OF THESE)

4500 (234) N GREEK KEY PLATE W/ RIBBED EXT. - DK. MARI. (A GREAT PUMPKIN EXAMPLE; FLAT W/ RICH COLOR AND IRID.)

8750 235. N GOOD LUCK BOWL W/ P.C.E. AND RIBBED EXTERIOR - AQUA OPAL. (EXTREMELY RARE; SUPER THICK OPAL. AND GREAT IRID.)

5000 236. N GOOD LUCK 8 RUFFLED BOWL W/ RIBBED EXTERIOR - AQUA OPAL. (VERY RARE AND VERY DESIRABLE; GREAT IRID. AND NICE)

8500 237. N LATTICE AND POINSETTIA FTD. RUFFLED BOWL W/ RIBBED EXT. - AQUA OPAL. (ONE OF THREE KNOWN; OPAL. ON EDGE; GO FIND ANOTHER ONE!)

1950 238. N LATTICE AND POINSETTIA FTD. RUFFLED BOWL W/ RIBBED EXT. - ICE BLUE (RARE ITEM W/ NICE GOLD HIGHLIGHTS)

700 (238a) N STRAWBERRY PLATE W/ BASKETWEAVE EXT. - MARI. W/ OPAL. TIPS (EXTREMELY RARE ITEM IN THIS COLOR; TOUGH COLOR TO FIND)

1950 (238b) N STRAWBERRY RUFFLED BOWL W/ BASKETWEAVE EXT. - MARI. W/ OPAL. TIPS (EXTREMELY RARE; FIRST REPORTED BOWL IN THIS COLOR; OPAL. IS QUITE OBVIOUS ON IT - A TOUGHIE)

50 239. N Peacock at the Fountain Handled Punch Cup - Blue (silvery; but if ya need one...)

3750 240. N ROSE SHOW PLATE - EMERALD GREEN (FANTASTIC COLOR AND IRID.; HAS A BRIGHT BLUE FINISH; HAS FLAKE ON ONE ROSE PETAL; SMALL CHIP ON BASE MOLD LINE)

3100 241. N ROSE SHOW PLATE - ELEC. BLUE (RARE AND VERY DESIRABLE; SUPER IRID.; HAS FLAKE ON ONE ROSE PETAL)

1050 242. N ROSE SHOW 8 RUFFLED BOWL - LIME ICE GREEN (EXTREMELY RARE BASE COLOR W/ SUPER IRID.; HAS CHIP ON COLLAR BASE)

2600 243. N ROSE SHOW 8 RUFFLED BOWL - AQUA OPAL. (ABSOLUTELY SUPER ITEM; PERFECT W/ THICK OPAL.)

1150 244. N ROSE SHOW 8 RUFFLED BOWL - GREEN (VERY RARE; VERY TOUGH COLOR TO FIND; GREAT IRID.) *chip (big on base)*

850 245. N ROSE SHOW 8 RUFFLED BOWL -- ELEC. BLUE (RARE AND DESIRABLE; NICE IRID.; MAY HAVE PINHEAD)

750 246. N ROSE SHOW 8 RUFFLED BOWL -- PURP. (NICE EXAMPLE W/ A MULTI-COLORED IRID.)

1000 247. N ROSE SHOW 8 RUFFLED BOWL -- ICE BLUE (RARE AND DESIRABLE; NICE PASTEL FINISH)

2000 248. N POPPY SHOW 8 RUFFLED BOWL -- GREEN (EXTREMELY RARE ITEM TO FIND; GREAT COLOR AND IRID.) *chip on base*

1850 249. N POPPY SHOW 8 RUFFLED BOWL -- ELEC. BLUE (SUPER EXAMPLE; GREAT BLUE HIGHLIGHTS)

1100 250. N POPPY SHOW 8 RUFFLED BOWL -- ICE GREEN (EXCELLENT EXAMPLE; FANTASTIC IRID. AND COLOR) *chip*

850 251. N POPPY SHOW 8 RUFFLED BOWL -- DK. MARI. (SUPER EXAMPLE; NICE AND DARK)

195 252. Westmoreland Estate Breakfast Sugar and Creamer -- Blue Opal. (scarce set; not a lot of opal. on sugar)

375 253. Signed Crider Pastel Swan -- Aqua Opal. (super example for a new item; great irid.)

110 254. Fenton Stretch 2 Pc. Tumble Up -- Celeste Blue (scarce collectible; nice color)

100 255. FENTON FLOWERS FTD. ROSE BOWL -- WHITE (RARE ITEM THAT APPEARS TO HAVE PERFECT FEET)

40 256. Fenton Pastel Swan -- Ice Green (will glow under blacklight)

30 257. Fenton Pastel Swan -- Celeste Blue (nice color)

___ 258. Cambridge Near Cut Handled Creamer -- Mari. (scarce item; nice color)

___ 259. M'burg Diamond Tumbler -- Dk. Mari. (nice dark example)

___ 260. N Oriental Poppy Tumbler -- Ice Blue (rare item; irid. is really light)

___ 261. Dugan Fan Ftd. Gravy Boat -- P. Opal. (excellent opal. and has nice overlay)

___ 262. Dugan Fan Ftd. Round Flared Bowl -- P. Opal. (excellent opal. and has nice overlay)

___ 263. Diamond Glass Co. Cupped in Console Bowl on Black Base -- Red (very scarce item; complete w/ black base)

___ 264. Heisey Style Paneled Perfume Atomizer -- Lt. Mari. (desirable item; great irid.)

___ 265. Pair U.S. Glass Paneled Domed Candlesticks -- Opaque Green (scarce pair; nice color and irid.)

___ 266. Pair U.S. Glass Domed Candlesticks -- Celeste Blue (very scarce pair; super color and irid.)

___ 267. Pair (Maker) Square Based Candlesticks -- Clear/ Iridized (unusual pair; sorta Heisey looking)

___ 268. St. Clair I.F.F. Tumbler -- Blue (squished)

___ 269. 8-3/4" FENTON VINTAGE GRAPE BOWL W/ 3 IN 1 EDGE -- RED (RARE AND VERY DESIRABLE COLOR AND SHAPE; CHERRY RED W/ A DARKER MULTI-COLORED IRID.; MAY HAVE PINHEAD ON ONE GRAPE)

___ 270. Surprise!

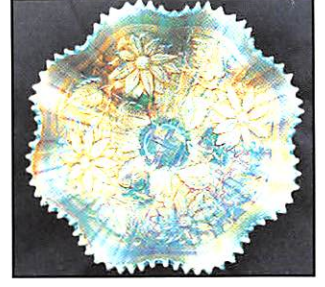
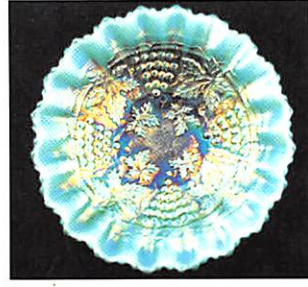
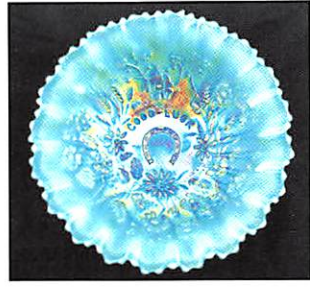
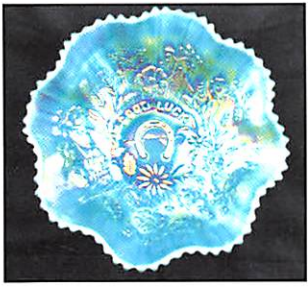
FOR THE RESULTS OF THIS OR ANY BURNS AUCTION SERVICE AUCTION SEND A S.A.S.E. AND \$3.00 (INCLUDE NAME OR DATE OF AUCTION) TO:

EMMA TILTON
P.O. BOX 273 • GNADENHUTTEN, OH 44629

VISIT US ON THE WEB!
<http://zeus.kspress.com/woodstandfurnsauction>
for pictures, complete listings and upcoming auctions

NOTES

Horizontal lines for notes.



AUCTION SERVICE
P.O. BOX 608 • BATH, NEW YORK 14810

**Heart of America
Carnival Glass
Association
Convention Auction**

9:30 A.M.

Saturday, April 29, 2000

Preview Friday Evening at 6:30 P.M. & 7:00 A.M. Saturday

First Class Mail
U.S. Postage
PAID
Eugene, Oregon
Permit No. 305

